

AVAILABLE MARKS	TOTAL MARKS GAINED
60	

YOUR CANDIDATE NUMBER



The Universities of Melbourne, Adelaide and Western Australia, the Minister for Education in New South Wales, the Minister for Education, Training and Employment in Queensland and the Minister for Education and Skills, Tasmania, through the University of Tasmania

LICENTIATE DIPLOMA IN THEORY

Harmony and counterpoint

Part I

2.00 PM to 5.00 PM

SAMPLE PAPER 1

Time allowed: Three hours

Write your candidate number in the space at the top of this paper.
Write your answers neatly and clearly on this paper and on any additional sheets required.
Clearly label all extra sheets with your candidate number and the question number,
attach them to this paper and return it to the Supervisor.

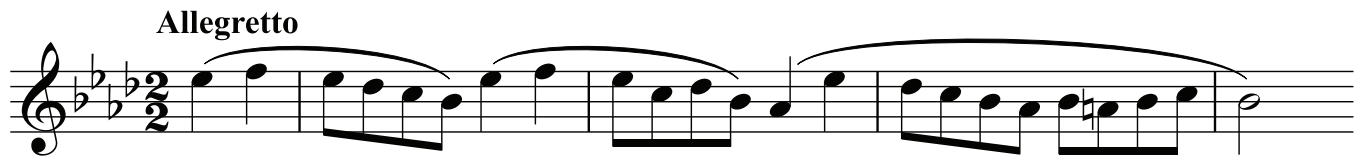
Answer only ONE part of this question

EITHER Use one of the following motives to compose a 16-bar dance for keyboard in the style of a Baroque suite movement. Credit will be given for use of appropriate stylistic features of the dance.

Sarabande opening:



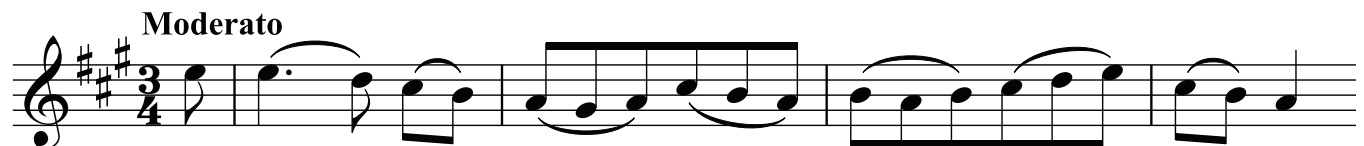
Gavotte opening:



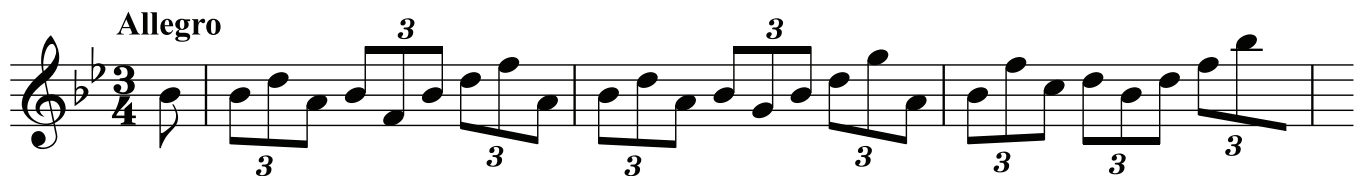
Gigue opening:



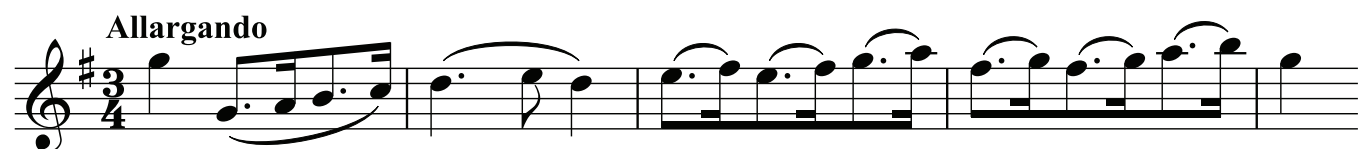
Courante opening:



Corrente opening:



Minuet opening:



OR Use one of the following motives to compose an étude of not more than 24 bars in a standard form for an unaccompanied solo orchestral instrument of your choice. The motive may be transposed to suite the range of your chosen instrument. Write at concert pitch. Technical markings are not required but may be included if desired. Label your choice of instrument.

Motive for strings:

Allegro moderato

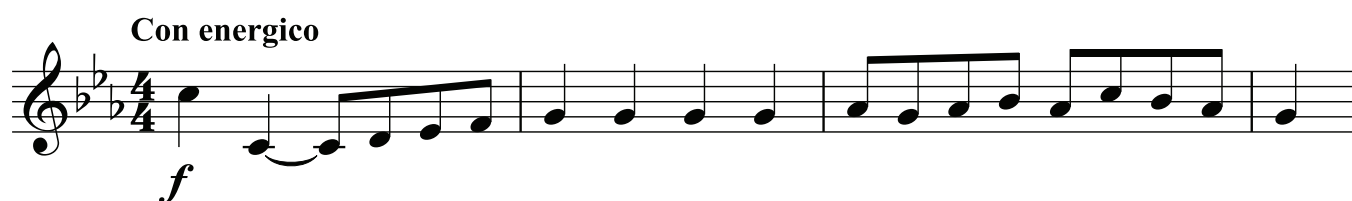


mp

This musical notation is for a string motive in 2/4 time, marked *Allegro moderato* and *mp*. It consists of eight measures. The first measure starts with a treble clef, a key signature of three sharps (F#, C#, G#), and a 2/4 time signature. The melody begins with a quarter note G4, followed by quarter notes A4, B4, and C5. The second measure contains a quarter note D5, a quarter note C5, and a quarter note B4. The third measure has a quarter note A4, a quarter note G4, and a quarter note F#4. The fourth measure features a quarter note E4, a quarter note D4, and a quarter note C4. The fifth measure contains a quarter note B3, a quarter note A3, and a quarter note G3. The sixth measure has a quarter note F#3, a quarter note E3, and a quarter note D3. The seventh measure consists of a quarter note C3, a quarter note B2, and a quarter note A2. The eighth measure ends with a quarter note G2. The notation includes various rhythmic values such as quarter notes, eighth notes, and sixteenth notes, along with stems and beams.

Motive for woodwind:

Con energico



f

This musical notation is for a woodwind motive in 4/4 time, marked *Con energico* and *f*. It consists of eight measures. The first measure starts with a treble clef, a key signature of two flats (Bb, Eb), and a 4/4 time signature. The melody begins with a quarter note Bb4, followed by quarter notes C5, D5, and E5. The second measure contains a quarter note F5, a quarter note G5, and a quarter note A5. The third measure has a quarter note Bb5, a quarter note C6, and a quarter note D6. The fourth measure features a quarter note E6, a quarter note F6, and a quarter note G6. The fifth measure consists of a quarter note A6, a quarter note Bb6, and a quarter note C7. The sixth measure has a quarter note D7, a quarter note E7, and a quarter note F7. The seventh measure contains a quarter note G7, a quarter note A7, and a quarter note Bb7. The eighth measure ends with a quarter note C8. The notation includes various rhythmic values such as quarter notes, eighth notes, and sixteenth notes, along with stems and beams.

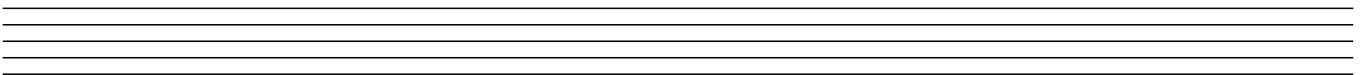
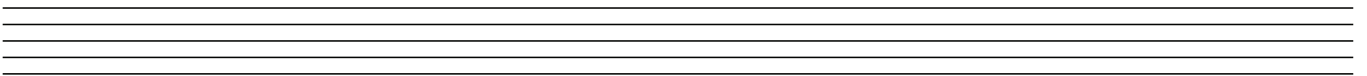
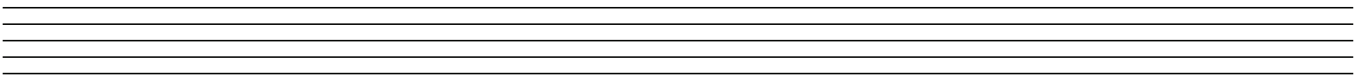
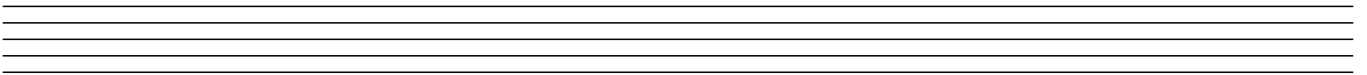
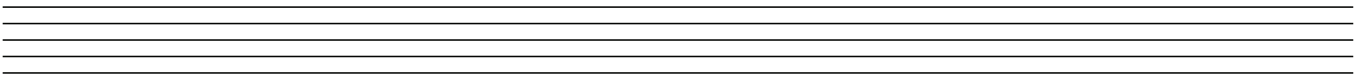
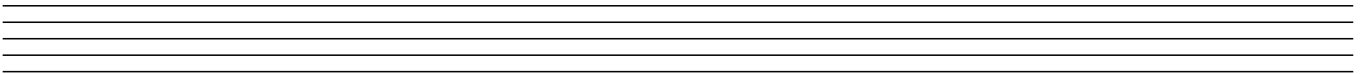
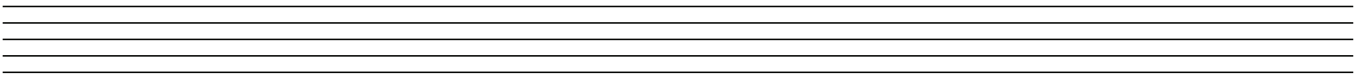
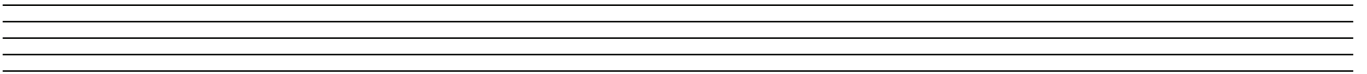
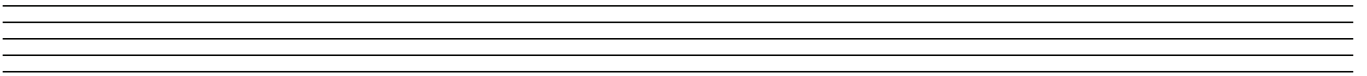
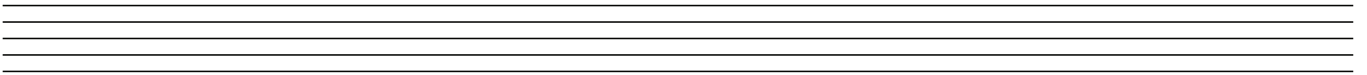
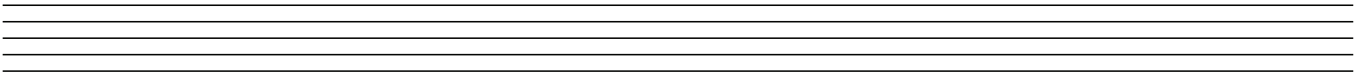
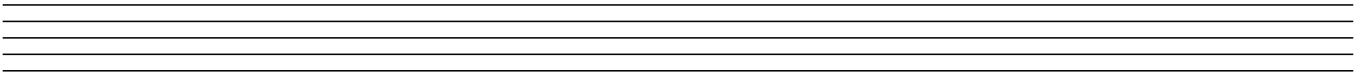
Motive for brass:

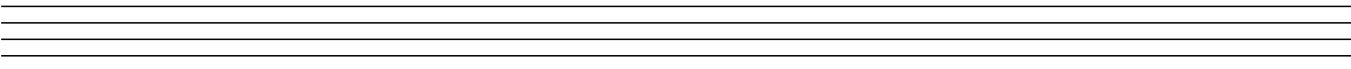
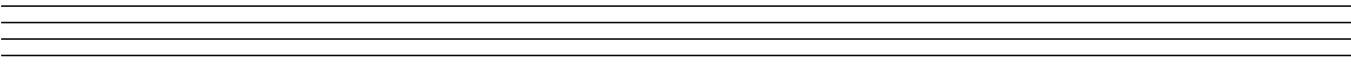
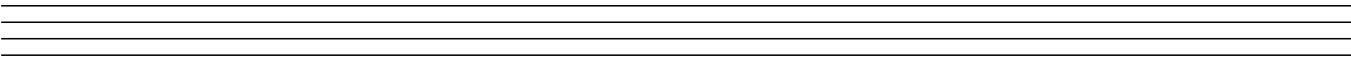
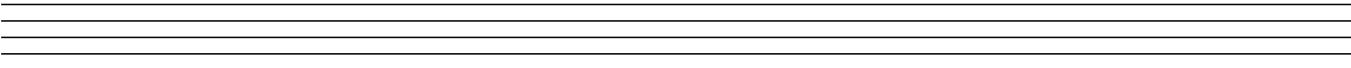
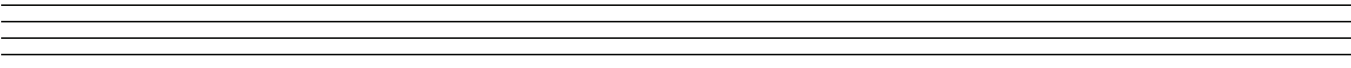
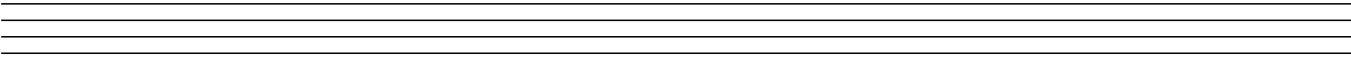
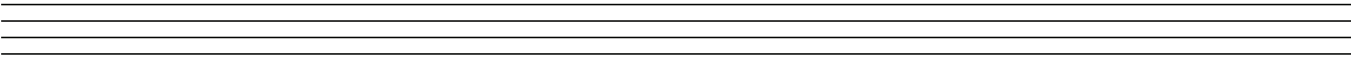
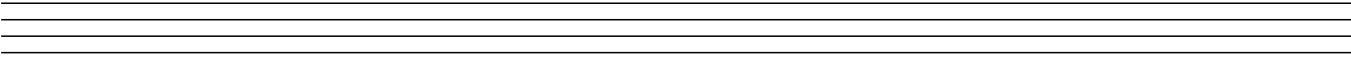
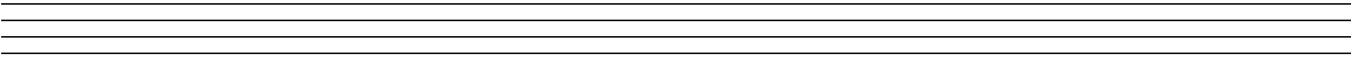
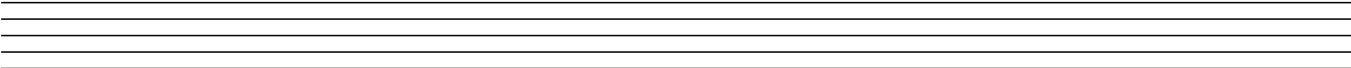
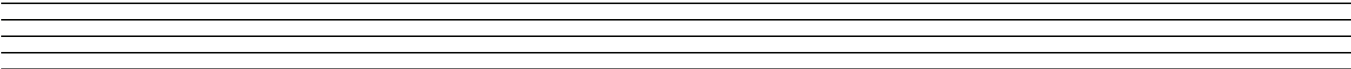
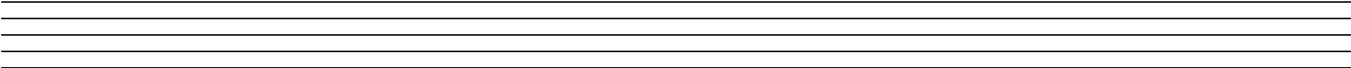
Andante



mp

This musical notation is for a brass motive in 2/4 time, marked *Andante* and *mp*. It consists of eight measures. The first measure starts with a treble clef, a key signature of one sharp (F#), and a 2/4 time signature. The melody begins with a quarter note G4, followed by quarter notes A4, B4, and C5. The second measure contains a quarter note D5, a quarter note C5, and a quarter note B4. The third measure has a quarter note A4, a quarter note G4, and a quarter note F#4. The fourth measure features a quarter note E4, a quarter note D4, and a quarter note C4. The fifth measure consists of a quarter note B3, a quarter note A3, and a quarter note G3. The sixth measure has a quarter note F#3, a quarter note E3, and a quarter note D3. The seventh measure contains a quarter note C3, a quarter note B2, and a quarter note A2. The eighth measure ends with a quarter note G2. The notation includes various rhythmic values such as quarter notes, eighth notes, and sixteenth notes, along with stems and beams.



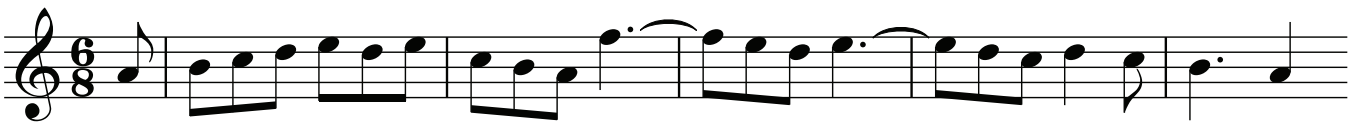


Use ONE of the following subjects to create a three-voice fugal exposition. Demonstrate that the countersubject is invertible. You may use a redundant entry if you wish. Write for pianoforte or for strings in open score. Label the instrument(s).

(i)



(ii)



(iii)



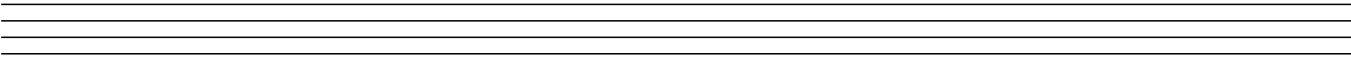
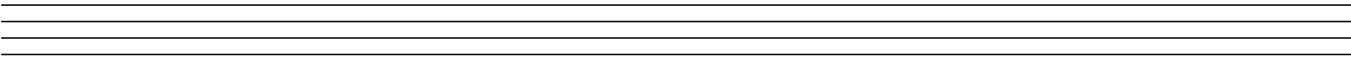
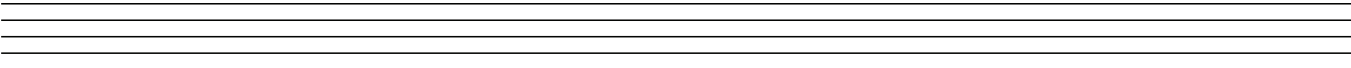
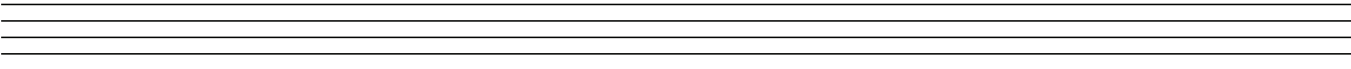
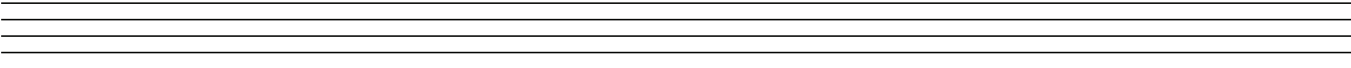
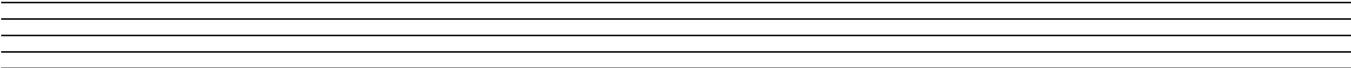
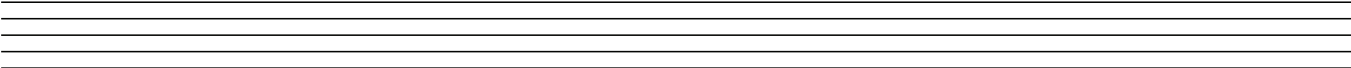
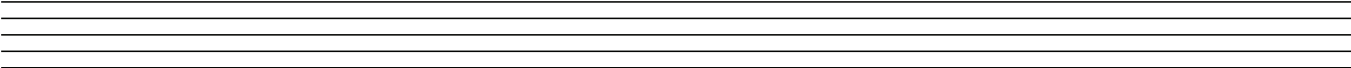
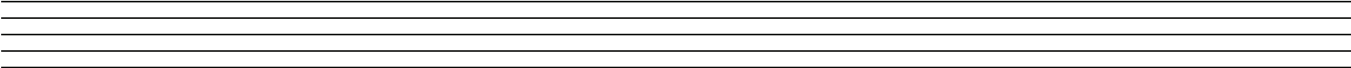
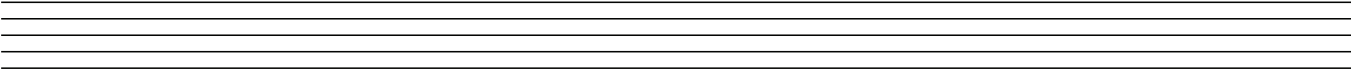
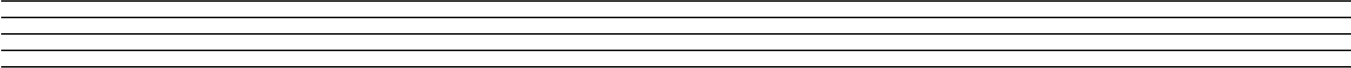
(iv)



(v)



The page contains ten sets of empty musical staves, each consisting of five horizontal lines, arranged vertically down the page. These staves are intended for writing musical notation.



Blank musical staves for writing.

The page contains ten sets of blank musical staves, arranged vertically. Each set consists of five horizontal lines, providing a template for musical notation.