

AVAILABLE MARKS	TOTAL MARKS GAINED
100	

YOUR CANDIDATE NUMBER



The Universities of Melbourne, Adelaide and Western Australia, the Minister for Education in New South Wales, the Minister for Education, Training and Employment in Queensland and the Minister for Education and Skills, Tasmania, through the University of Tasmania

ASSOCIATE DIPLOMA IN THEORY

Orchestration and arrangement

9.30 AM to 12.30 PM

SAMPLE PAPER 1

Time allowed: Three hours

Write your candidate number in the space at the top of this paper.
Write your answers neatly and clearly on this paper and on any additional sheets required.
Clearly label all extra sheets with your candidate number and the question number,
attach them to this paper and return it to the Supervisor.

EITHER

Orchestrate this excerpt from the last movement of Hummel's first piano sonata for **either** string quartet, wind quartet **or** brass quintet. A score in C should be used. Label the instruments on your score.

OR

Arrange this excerpt from the Beatles' *Yesterday* for **either** a jazz combination **or** for a 'garage band'. You may choose which instruments to use. Include in your arrangement:

- a chord chart
- a notated line for a lead instrument(s) in addition to the instrument playing the melody
- a notated line for a bass instrument.

Neither a vocal line nor notated drum part are required. A score in C should be used. Label the instruments on your score.

1 F Em A⁷ Dm

Yes - ter - day, ___ all my trou - bles seemed so far a - way, ___
Sud - den - ly, ___ I'm not half the man I used to be, ___

4 B^b C B^b F C Dm⁷ G⁷ B^b F

now it looks as though they're here to stay, _ oh I be - lieve _ in yes - ter - day _
there's a sha - dow hang - ing o - ver me, _ oh Yes - ter - day _ came sud - den - ly. _

8 A A⁷ Dm C B^b Dm Gm C⁷ F

Why she had to go I don't know she would - n't say. ___

12 A A⁷ Dm C B^b Dm Gm C F

I said some - thing wrong, now I long for Yes - ter - day. _____

The page contains ten sets of blank musical staves, arranged vertically. Each set consists of five horizontal lines, providing a template for writing musical notation. The staves are evenly spaced and occupy most of the page's vertical space.

Blank musical staves for orchestration.

The page contains ten sets of empty musical staves, arranged vertically. Each set consists of five horizontal lines, providing a template for writing musical notation. The staves are evenly spaced and occupy most of the page's vertical space.

The page contains ten sets of blank musical staves, arranged vertically. Each staff is composed of five parallel horizontal lines, providing a template for musical notation.

Create a piano reduction of the excerpt below from a Haydn symphony.

Allegro
a2

2 Oboi
f

2 Corni in F
f a2

Violino I
f

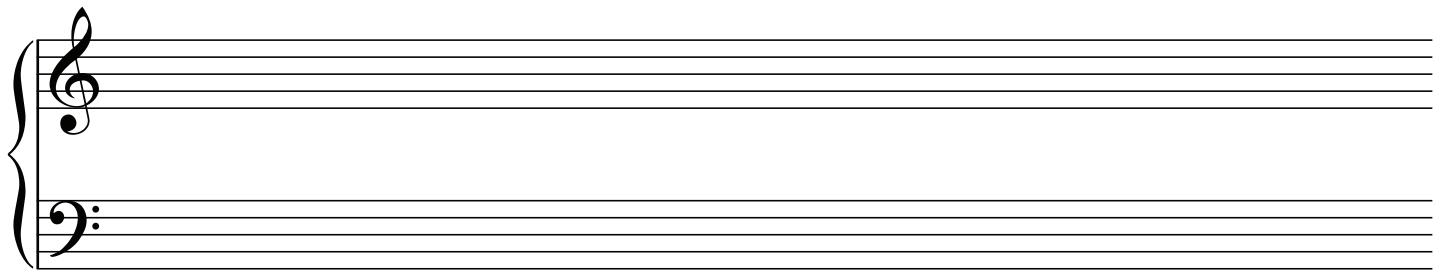
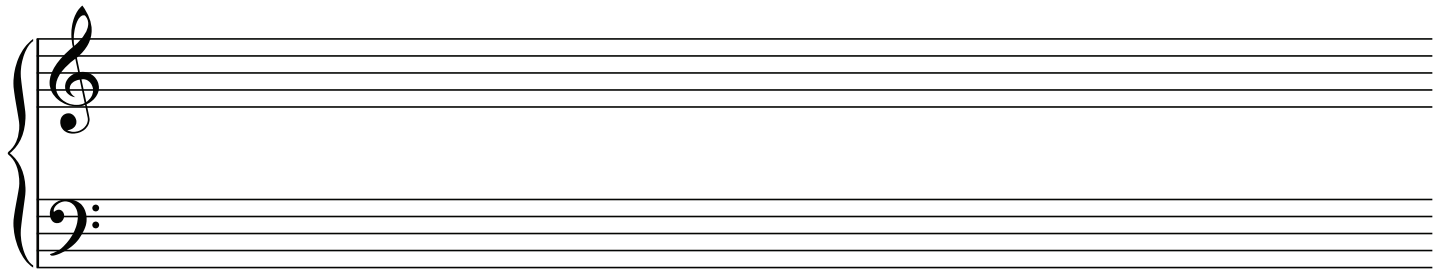
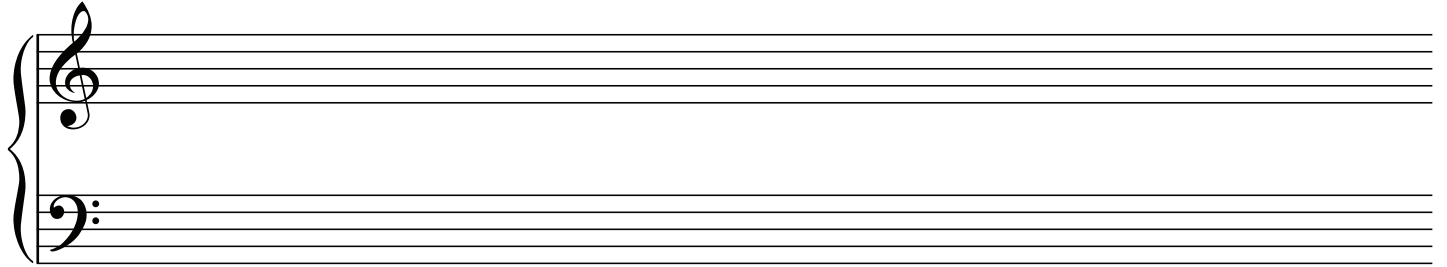
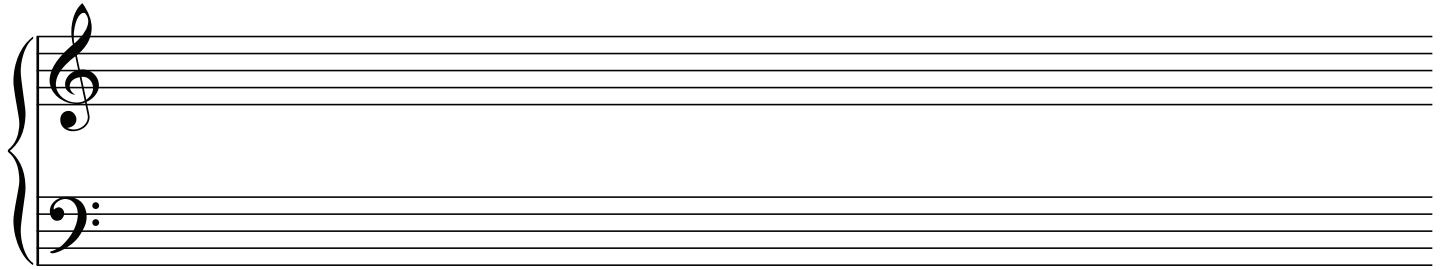
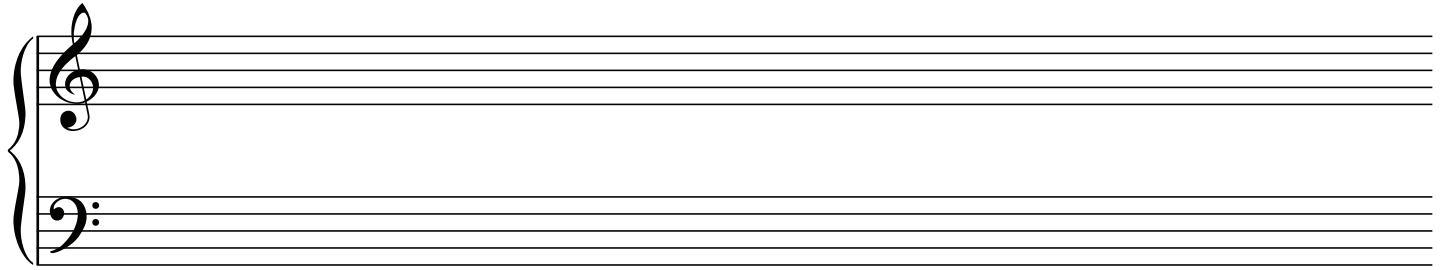
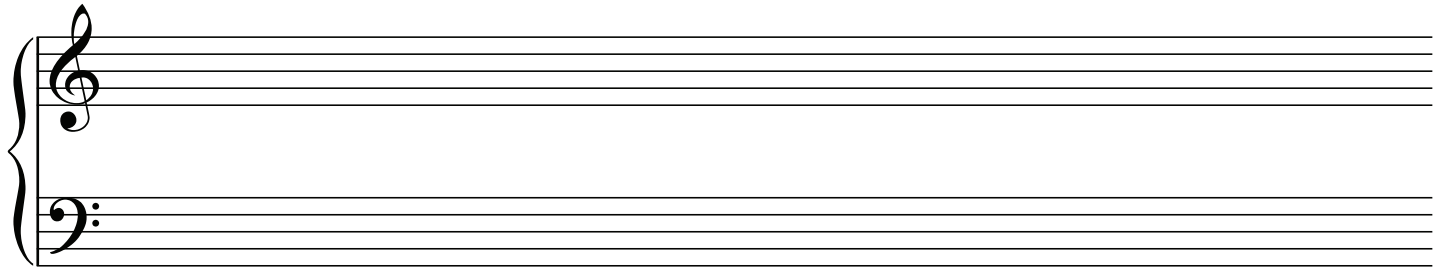
Violino II
f

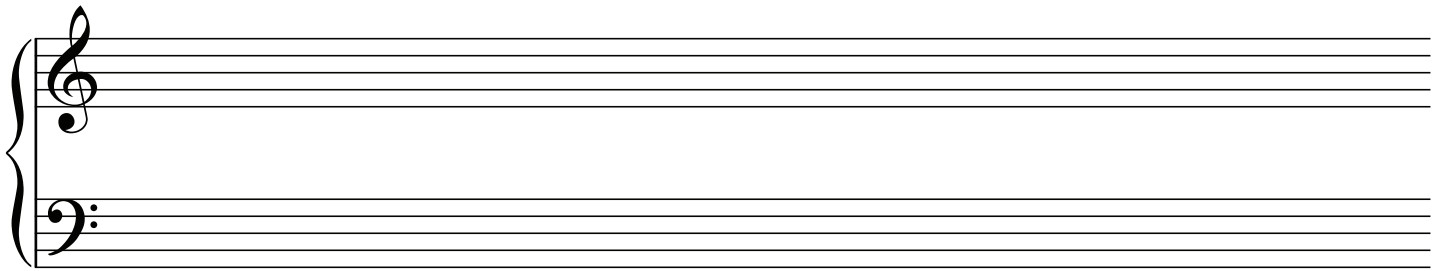
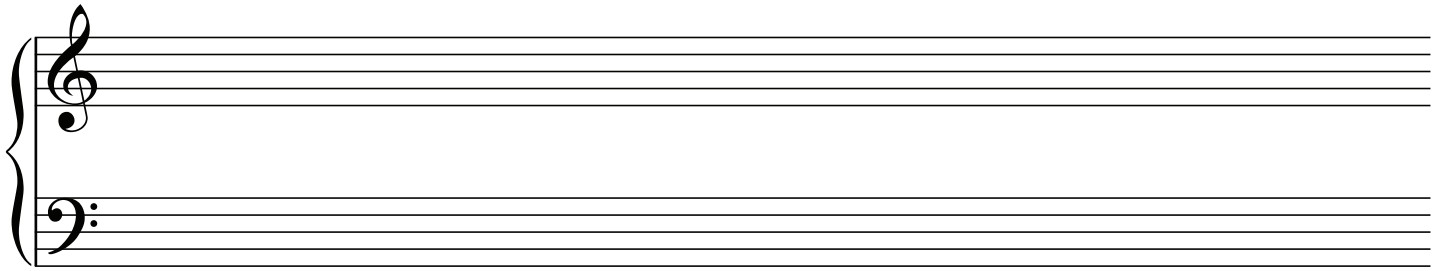
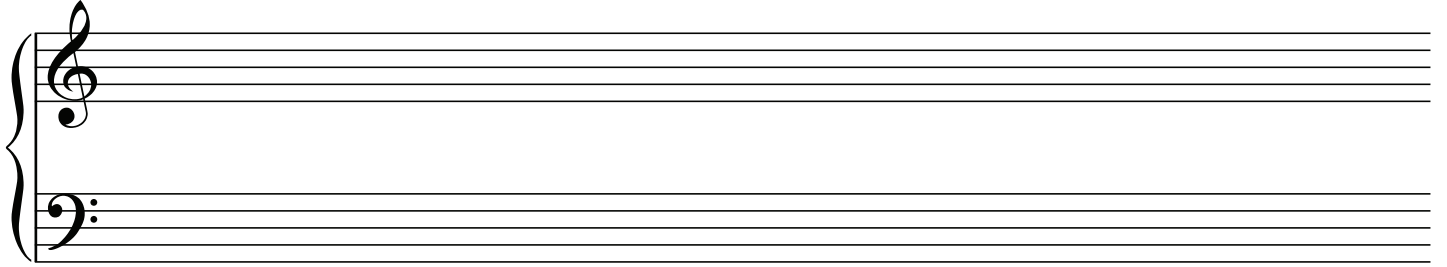
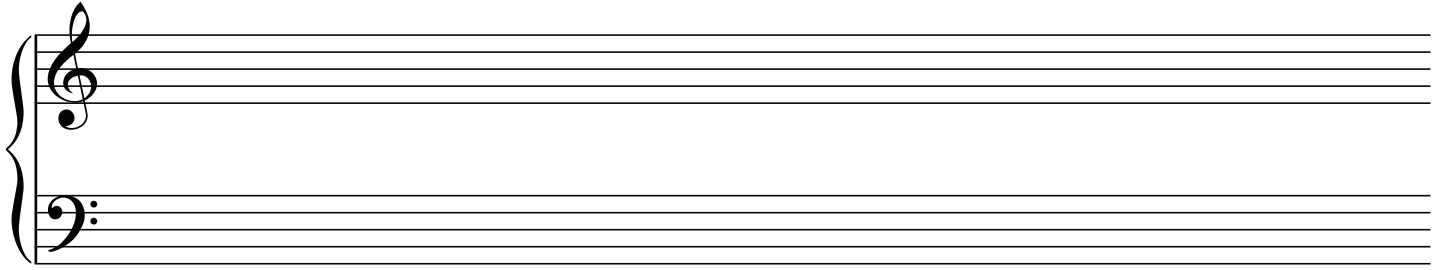
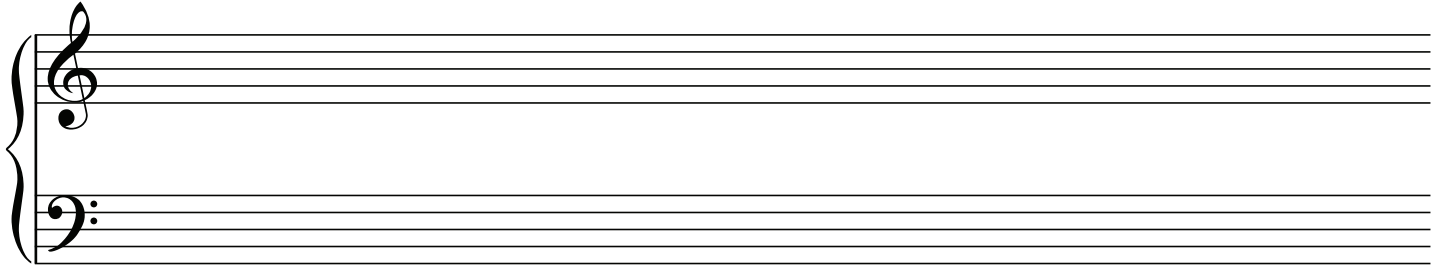
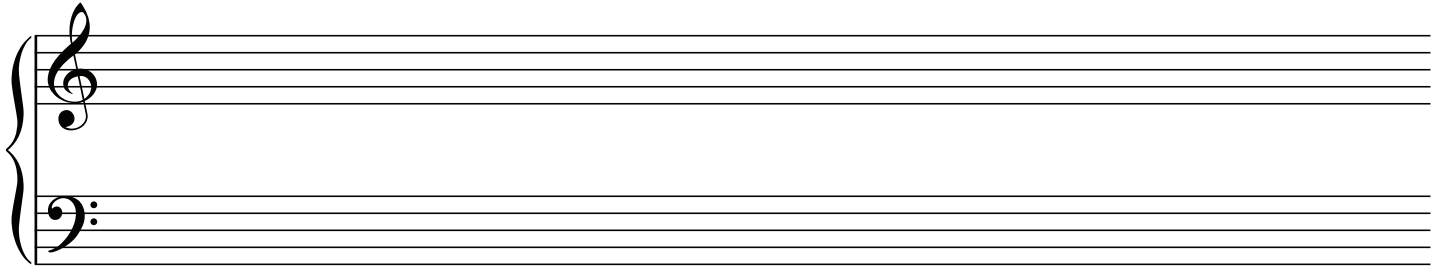
Viola
f

Violoncello,
Basso e Fagotto
f

8

a2





EITHER

Transcribe the excerpt below from a Schumann lied for an instrumental ensemble of at least four instruments of your choice. A score in C should be used. Label the instruments on your score.

OR

Transcribe the excerpt below from a Schumann lied for one of the following wordless *a capella* four-part vocal ensembles:

- SATB (soprano, alto, tenor bass)
- SSAA (2 soprano parts, 2 alto parts)
- TTBB (2 tenor parts, 2 bass parts)

Label the vocal parts on your score.

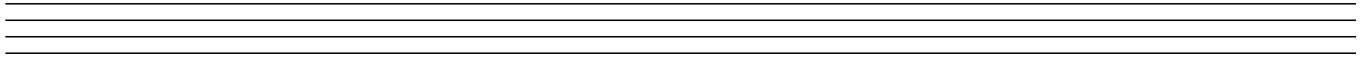
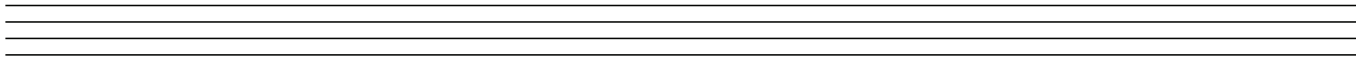
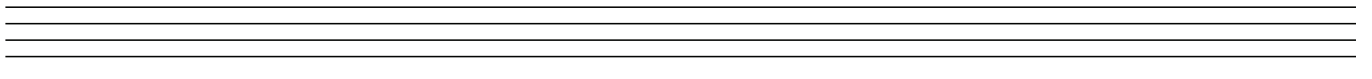
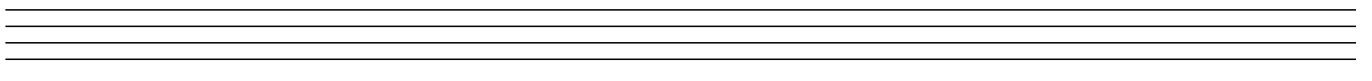
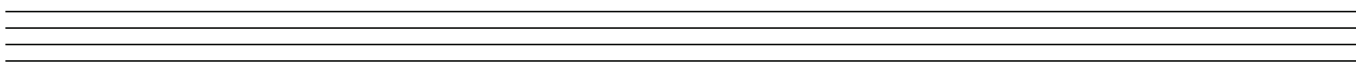
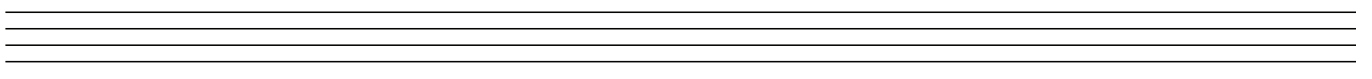
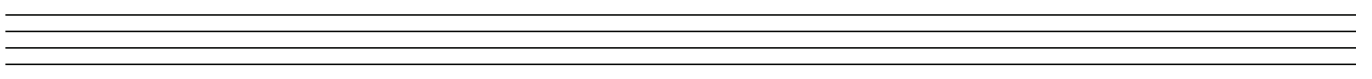
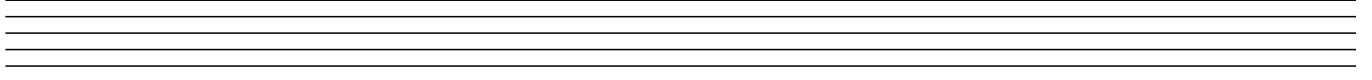
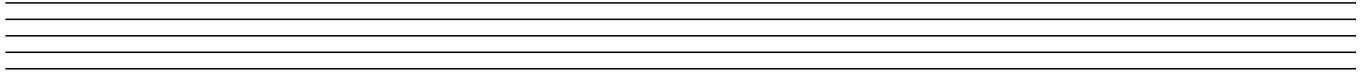
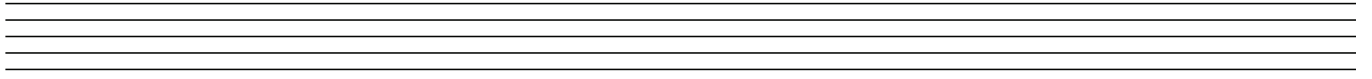
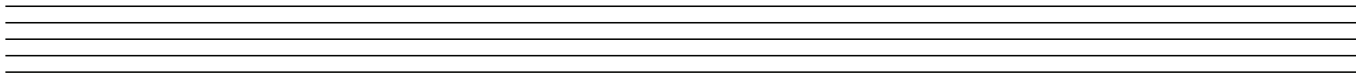
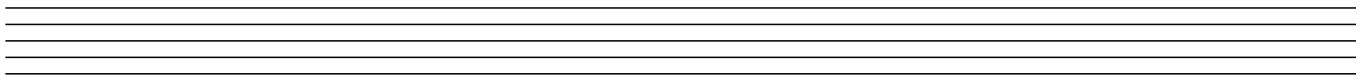
Langsam
p

Wenn ich in dei - ne Au - gen seh', so schwin-det all' mein Leid und Weh, doch wenn ich küs-se dei - nen

Mund, so werd' ich ganz und gar ge - sund. Wenn ich mich lehn' an dei - ne Brust, kommt's

ü - ber mich wie Him-mels-lust doch wenn du sprichst: "Ich lie - be dich!" so muss ich wei-nen bit - ter - lich.

ritard.



The page contains ten sets of blank musical staves, arranged vertically. Each staff is composed of five parallel horizontal lines, providing a template for musical notation.

The page contains ten sets of blank musical staves, arranged vertically. Each staff is composed of five parallel horizontal lines, providing a template for musical notation.

