

11 

12 CD 2 57 (a)

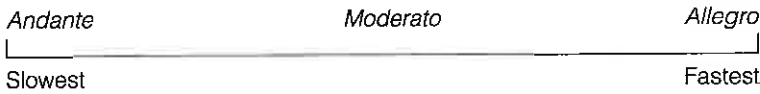
13 Woodwind family

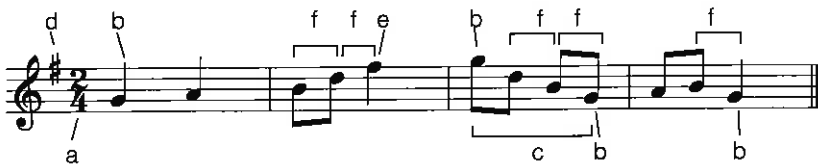
14 CD 2 58 Staccato 59 Legato

- 15 (a) Fast and lively
 (b) To be played moderately loudly
 (c) To be played in a short and detached manner,
 (d) A slur; join the notes smoothly, *legato*
 (e) To be played very quietly

manner

7 manner
manner

16 

17 

Music Craft Preliminary Grade
 TG Book B L39 p 46
 Q 15(c) - incorrect spelling

PRELIMINARY GRADE	Pitches, scales and keys	Rhythm and metre	Triads and intervals	Instruments	Aural	Terms	Set Works	
	1	Treble clef		Skip, step and leap				
	2	Specific pitch naming; Leger lines; C major scale	Beats, bars and bar lines					
	3		Note values	C major triad				
	4				Keyboard instruments			
	5	Revision						
	6	Naming scale degrees						
	7		$\frac{2}{4}$ metre					
	8			Triads				
	9				Stringed instruments: violin and viola			
	10	Revision						
	11	G major scale						
	12		$\frac{3}{4}$ metre				Tempo, Andante	
	13	Scale degrees in G major					Piano, forte	
	14				Stringed instruments: cello and double bass			
	15	Revision						
	16			Triads; Perfect fourth; Intervallic inversion				
	17		Rests				Legato, staccato	
	18	Scale degrees in C major melodies					Moderato	
	19				Woodwind instruments: flute and clarinet			
	20	Revision						
	21	F major scale						
	22		Quavers (eighth notes) in $\frac{2}{4}$ metre		Woodwind instruments: oboe and bassoon			
	23			F major triad; Minor third			Mezzo forte	
	24				Brass instruments: trumpet and horn			
	25	Revision						
	26	Scale degrees in F major melodies					Allegro	
	27		Quavers (eighth notes) in $\frac{3}{4}$ metre					
	28	Identification of melodic similarity and difference		Root position triads				
	29	Scale degrees in G major melodies					Pianissimo	
	30				Brass instruments: trombone and tuba			
	31	Revision						
	32	Scale degrees in melodies					Adagio	
	33		Rhythms in $\frac{2}{4}$ and $\frac{3}{4}$ metre					
	34			Descending triadic intervals				
	35				Percussion instruments			
	36			Root position triads				
	37	Revision						
	38	Test (Lessons 1-5) should be: (Lessons 1-15)						
	39	Test (Lessons 16-25)						
40	Test (Lessons 26-37)							

NB: This is a global error. All pages of the Thematic Outlines in each of the '8' volumes of the Teacher's Guides contain this error.

LESSON 37

Question Map

Aural	7, 11
Pitches, scales and keys	1, 2, 3, 4, 5
Rhythm and metre	9
Terms	10
Triads and intervals	6, 8

Answer Key

1

2

3

4 (i) (ii) (iii)

5

6

7 CD 2 28 H 29 H 30 L 31 L 32 H 33 L

8 (i) 3rd (ii) 3rd (iii) 4th (iv) 5th (v) 8ve

9

10

Abbreviations to be shown

11 CD 2 34 Brass family 35 Percussion family

Preliminary / Teacher's Guide / Book B / Lesson 37 / page 42

TG, prelum B page 18

LESSON 25

Question Map

Aural	4, 7, 10
Instruments	8
Pitches, scales and keys	1, 2, 3
Rhythm and metre	5
Terms	9
Triads and intervals	6

Answer Key

1

2

3

4 CD 1 13 (b)

5

6 (i) (ii) (iii)

7 CD 1 14 HR 15 LR 16 MR 17 HR 18 LR 19 MR 20 LR

8 Woodwind family

9 Middle/half/mid-

10 CD 1 21 (c)

Teacher's Guide Preliminary / Book B / Lesson 25 / page 18

The answer to Q1 is wrong and should be:

Preliminary Grade / Teacher's Guide / Book B / Lesson 39 / page 45

LESSON 39

Question Map

Questions	13, 14
Notes, scales and keys	1, 2, 3, 4, 5, 6
Rhythm and metre	10, 11, 12
Intervals	15, 16, 17
Chords and intervals	7, 8, 9

Answer Key

The answer to Q2 is incorrect. Should be:

1) G major

2) $\hat{1}$ $\hat{3}$ $\hat{5}$ $\hat{4}$ $\hat{6}$ $\hat{5}$ $\hat{7}$ $\hat{1}(\hat{8})$

3rd (ii) 3rd (iii) 4th (iv) 5th (v) 8ve
 Q2 50 H 51 L 52 L 53 H 54 L 55 H
 Q2 56 (a)



Preliminary Grade/Teacher's Guide/Lesson 39/Book B/
page 43

LESSON 38

Question Map

Questions	11, 12, 13, 14
Notes, scales and keys	1, 2, 3, 4, 5
Rhythm and metre	7, 8, 9, 10
Interval	15
Scale and intervals	6

Answer Key

Sk Sk Sk Sk Sk Sk Sk St Sk Sk Sk St

G E C E G B D F E C A F G

C E G D F B E C G E C

Sk Sk Lp Sk Lp Sk Lp Sk Lp Lp Sk

F A F C E A C F D A E G

1(8) 7 6 5 4 3 2 1 2 3 4 5 6 7 1(8)

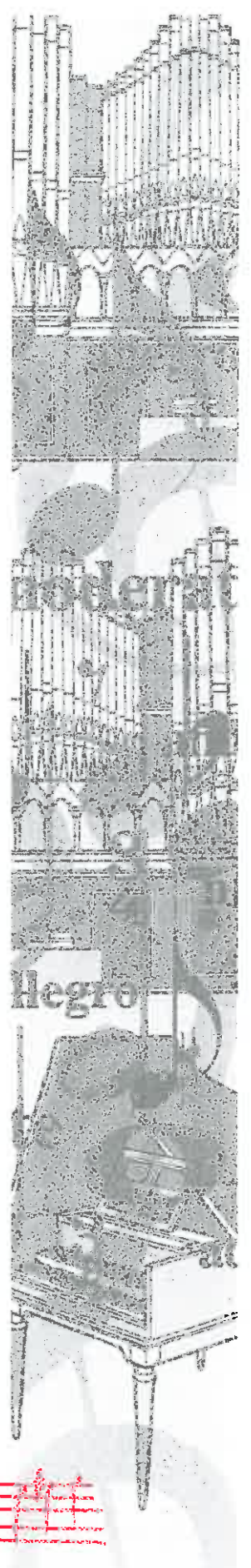
Q2 46 (b)

Q2 47 (b)

Q4 should be:

Q5 should be:

> Both answers are incorrect



Question Map

Aural	4
Instruments	1
Pitches, scales and keys	2, 3, 5, 7, 8
Terms	6

Answer Key

1 Woodwind family



4 CD 1 22 HR 23 HR 24 LR 25 MR 26 MR 27 LR



6 At a lively and fast speed.



The answer to Q2 is incorrect.
It should be:



Preliminary Grade/Teacher's Guide/Book 8/Lesson 21/page 9

Reason for the B \flat should be made clear through aural comparison with C major and through comparison with the sound of F - G - A - B \flat ; that is, the $\hat{3}$ - $\hat{4}$ semitone relationship must be uppermost in student's ear and mind. The $\hat{3}$ - $\hat{4}$ and $\hat{7}$ - $\hat{1}$ semitones still need to be stressed just as much as usually.

By this point students should be able to go ahead with scale degree exercises in the new scale, based on their prior experience with two different keys.

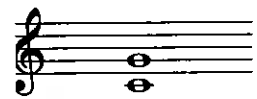
Summary

The scale and key signature of F major use one flat (B \flat).

Question Map

	7
Notes, scales and keys	1, 3, 5, 6
	4
Intervals	2

Answer Key



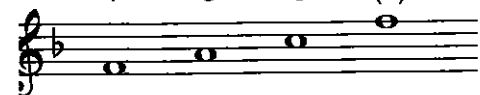
- a) *Piano*, to play quietly
- b) Flat, lowers the pitch of the note it is placed in front of by one semitone.



$\hat{1}$ $\hat{2}$ $\hat{3}$ $\hat{4}$ $\hat{5}$ $\hat{6}$ $\hat{7}$ $\hat{1}(\hat{8})$



$\hat{1}$ $\hat{3}$ $\hat{5}$ $\hat{1}(\hat{8})$



D 1 1 (c)

The answer to Q5 is incorrect. It should be:

