

- 1 • Write the letter names of these notes under the staff.
- Write the intervals (size only) between notes above the staff.

A musical staff in bass clef with a key signature of one flat (Bb). The notes on the staff are: Bb, Ab, Gb, Fb, Eb, Db, Cb, Bb, Ab, Gb, Fb, Eb, Db, Cb, Bb. Above the staff, there are downward-pointing chevrons indicating intervals between each pair of adjacent notes.

- 2 (a) In which direction does the seventh of a dominant 7th chord resolve? _____
- (b) Name three ways that the 7th of a dominant 7th chord can be approached. _____
- (c) Write the full figured bass figuring of a dominant 7th chord. _____
- (d) Write the abbreviated figured bass figuring of a dominant 7th chord. _____

- 3 Build dominant 7th chords based on the following notes. Use accidentals where necessary.

Four musical staves labeled (i) through (iv) in treble clef, each containing a single note: (i) C4, (ii) D4, (iii) E4, (iv) F4.

- 4 Study the following example.

Each of the notes in the soprano line indicated by an arrow is a passing tone.

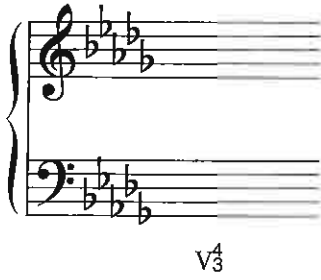
On each line above each passing tone describe the two qualities of the passing tone as: diatonic (D) or chromatic (C), accented (A) or unaccented (U).

A musical example in 3/4 time with a key signature of one sharp (F#). The soprano line contains several notes, with arrows pointing to specific notes identified as passing tones. Red scribbles are present above the staff in the second measure.

Example contains parallel fifths between S/A beats 1-2 bar 2.

Student Workbook/Grade 4/Book 1/Lesson 2/page 13

(iii) D \flat major



V_3^3

(iv) B \flat minor



V_3^3

$\begin{matrix} 6 \\ 4 \\ 3 \end{matrix}$

9 Give the English meaning of the following Italian terms.

- (a) *Sotto voce* _____
- (b) *Tenuto* _____
- (c) *Ad lib.* _____
- (d) *Attacca* _____

10 Performance terms

Listen to CD 2 Tracks 29–32.

On each track, you will hear a four-bar piece of music.

Choose the appropriate Italian term from *tenuto*, *staccato*, *con forza* or *sotto voce* to describe what you hear on each track.



	Italian term
Track 29	
Track 30	
Track 31	
Track 32	

11 Triads

Listen to CD 2 Tracks 33–35.

On each track, you will hear a triad.

Identify the triad you hear as a major or minor triad in root position or first inversion, or a diminished or augmented triad in root position.

Write your answers in the table below.



	Track 33	Track 34	Track 35
Triad			

SWB Grade 4/L16/Q 8 (iii)/p 79
Musical figures

5 Write the inner parts of this progression following the given figuring.

I vii°6 I⁶ I ii V I

7

6 Add alto, tenor and bass parts to this melody following the given figuring.

I vii°6 I⁶ V I⁶ V I

- 7 • Write an appropriate harmonic scheme using Roman numerals and chord position numbers under this progression.
- Complete the inner parts following the figuring you give.

Student Workbook / Grade 4 / Book A / Lesson 12 / page 62
 Delete notes shown - they will lead to an error
 being written