

AVAILABLE MARKS	TOTAL MARKS GAINED
100	

YOUR CANDIDATE NUMBER

Australian Music Examinations Board



The Universities of Melbourne, Adelaide and Western Australia, the Minister for Education in New South Wales, the Minister for Education, Training and Employment in Queensland and the Minister for Education and Skills, Tasmania, through the University of Tasmania

MUSICIANSHIP - FIRST GRADE

9.30 AM to 11.00 AM

Wednesday 20th August 2014

Time allowed: One and a half hours

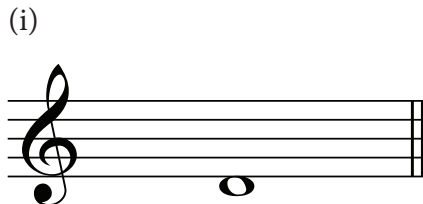
Write your candidate number in the space at the top of this paper.
Write your answers neatly and clearly on this paper and return it to the Supervisor.

Question 1	PITCH	Total Marks 14
-------------------	--------------	-----------------------

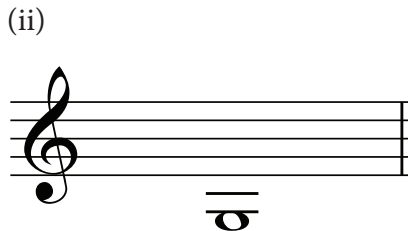
A

6	
---	--

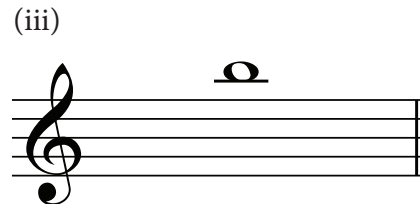
Name these notes.



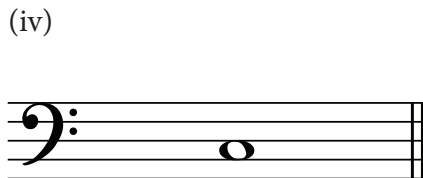
.....



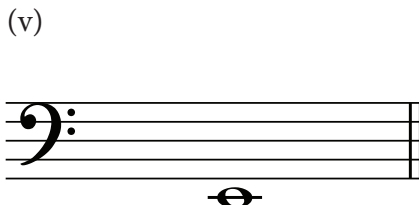
.....



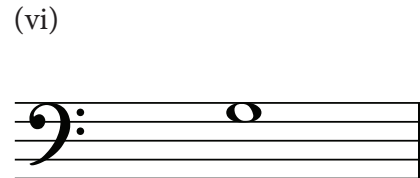
.....



.....



.....

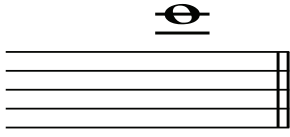


.....

B**4**

Add a clef to each note to make its letter name correct.

(i)



C

(ii)



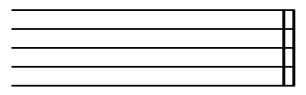
A

(iii)



B

(iv)



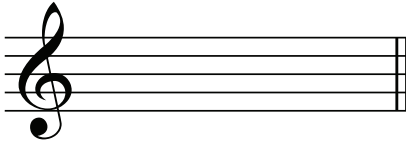
B

C**4**

Write these notes below the staff.

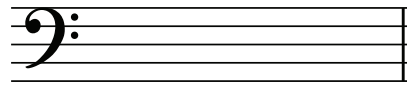
- Use crotchets.
- Use signs for sharp, flat and natural.

(i)



A sharp

(ii)

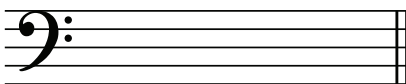


D natural

Question 2**KEYS and SCALES****Total Marks 23****A****3**

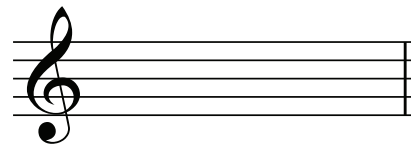
Write these key signatures.

(i)



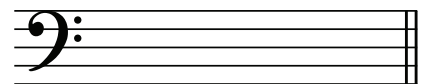
D major

(ii)



D minor

(iii)



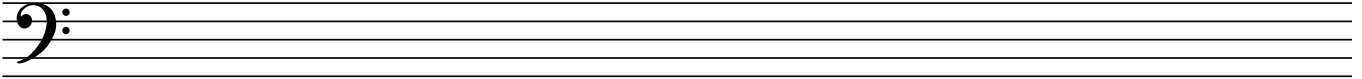
F major

B

7	
----------	--

Write the scale of A harmonic minor.

- Use crotchets.
- Write one octave descending.
- Mark the interval of a tone and a half with a slur.
- Complete the scale with a double barline.



C

7	
----------	--

Write the scale of G major.

- Do not write the key signature. Use accidental(s).
- Use minims.
- Write one octave ascending.
- Mark each tone with a slur.
- Complete the scale with a double barline.



D

6	
----------	--

Write the scale degree number or (tonic) sol-fa under each note of this melody.



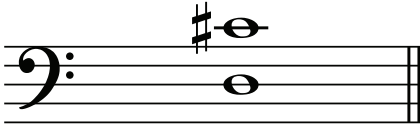
.....

A

3

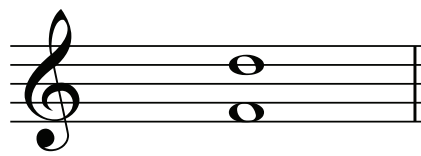
Name these intervals by number only.

(i)



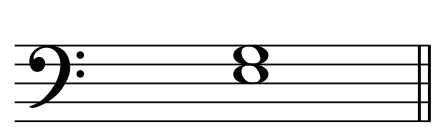
.....

(ii)



.....

(iii)



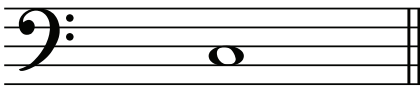
.....

B

4

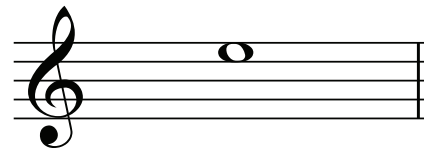
Write these intervals above the given tonic notes.

(i)



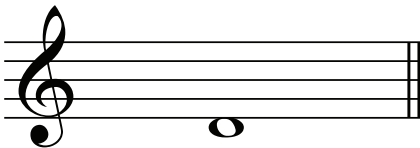
5th

(ii)



2nd

(iii)



4th

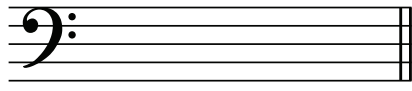
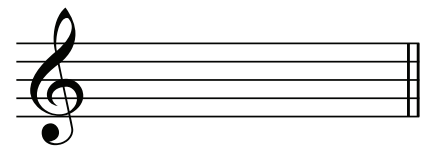
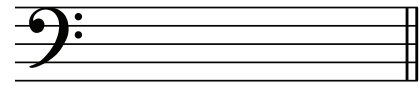
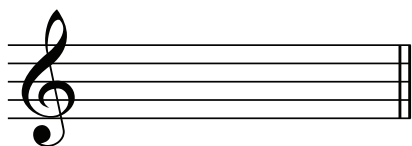
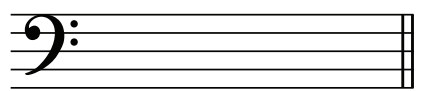
(iv)



8^{ve}

Write the following root position tonic triads.

- Use key signatures.
- Use semibreves.

<p>(i)</p>  <p>F major</p>	<p>(ii)</p>  <p>A minor</p>	<p>(iii)</p>  <p>D minor</p>
<p>(iv)</p>  <p>D major</p>	<p>(v)</p>  <p>E minor</p>	

A

4	
----------	--

Place an upright line in front of each accented word or syllable in this line of poetry.

Let the bells ring loud and true.

Write the time signature for each of the following.

(i)



(ii)

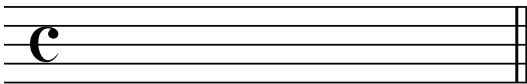


(iii)

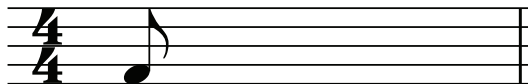


Complete each bar with a rest or rests in the correct order.

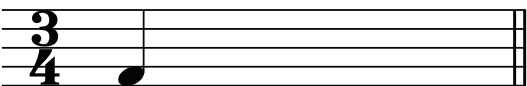
(i)



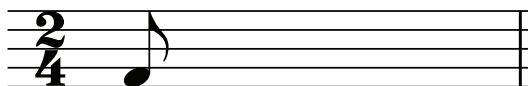
(ii)



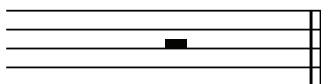
(iii)



(iv)

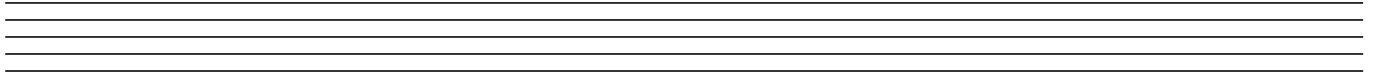


Name this rest.



.....

Write this melody one octave higher using the treble clef.

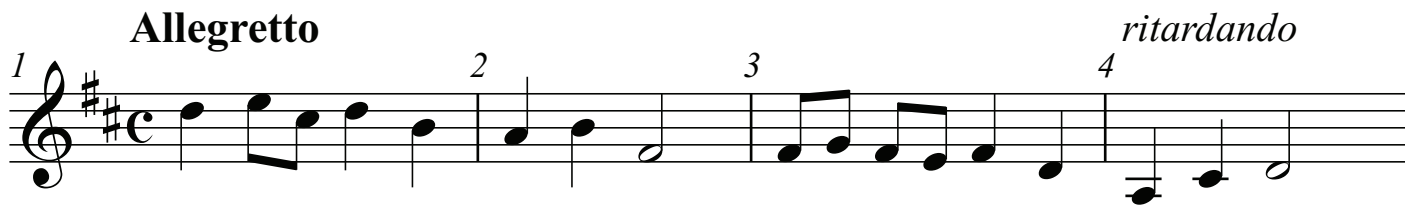


A

3

Give the English meaning of each of the following terms.

- (i) *staccato*
- (ii) *a tempo*
- (iii) *diminuendo*



Study the melody above and then answer the following questions.

- (i) What is the English meaning of the word above bar 1? 1

- (ii) Add a sign below the first note to show that the melody begins moderately loudly. 1
- (iii) Add a tie in an appropriate place. 1
- (iv) Add a sign to show that the notes in bar 3 become gradually louder. 1
- (v) Add a sign below the last note to show that melody finishes loudly. 1
- (vi) What is the English meaning of the word above bar 4? 1

- (vii) Add a sign to show that the melody has finished. 1